



# ***Power Pet Door***

## *Microphone Replacement*



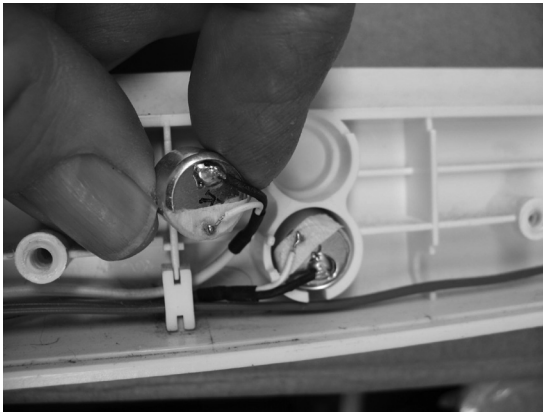
***REPAIR INSTRUCTIONS***

1. Remove battery compartment door and battery. Remove Power Pet Door from wall/door. Lay on flat surface with inside face down.
2. Remove all screws from rear of frame using #2 phillips. Separate frame to expose inner workings.
3. Observe orientation of inner and outer microphones on bottom of frame. Note wire colors on the pins. (Suggestion is to take a picture).



**Illustration 1**

4. Carefully pull outside facing microphone from frame, exposing pins.



**Illustration 2**  
Wire in illustration is white.

5. *On both replacement microphones, make sure there is a small piece of insulating tape surrounding the pin to which the white wire will be soldered. This prevents solder from contacting the metal case.*
6. *Unsolder one microphone at a time, then solder the replacement microphone, making sure there are no shorts (>1 Kohm lead to lead) and place the microphone back in the frame. Repeat for the second microphone. Ensure the proper orientation, as shown in step 3 above.*
7. *Screw frame back together.*
8. *Confirm the microphone operation before re-installing the door. Lean the door on a wall, plug in the AC power supply, turn on and verify the door manually opens with the top right push button. Then enable one side of the door at a time and check for adequate range. The range know should never have to be turned to its maximum position if the collar is within 3 feet of the door.*

# **High Tech Pet Products**

*The Most Ingenious Pet Products on the Planet!*

*See our complete line of ingenious pet products at*

***[www.hightechpet.com](http://www.hightechpet.com)***

*Manufactured in China*

***Engineered in the USA!***



***High Tech Pet Products, Inc.***  
*2476 Palma Drive, Suite A*  
*Ventura, CA 93003*  
***[www.hightechpet.com](http://www.hightechpet.com)***